

REFER TO ASSOCIATED PLAN AND SECTION DRAWINGS FOR MORE DETAILED LAYOUT OF LOADING INFORMATION

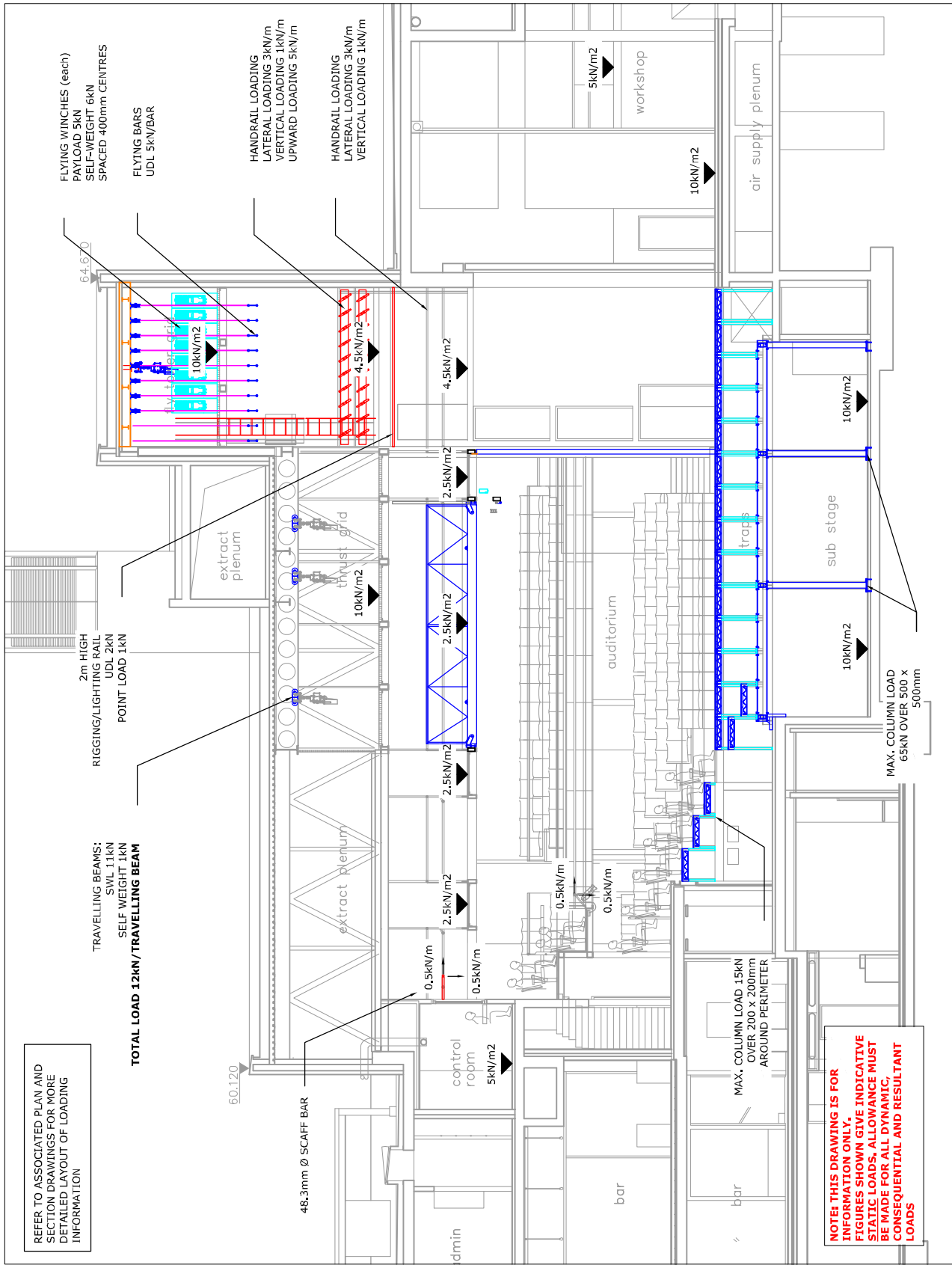
TRAVELLING BEAMS;  
SWL 11kN  
SELF WEIGHT 1kN  
**TOTAL LOAD 12kN/TRAVELLING BEAM**

2m HIGH  
RIGGING/LIGHTING RAIL  
UDL 2kN  
POINT LOAD 1kN

FLYING WINCHES (each)  
PAYLOAD 5kN  
SELF-WEIGHT 6kN  
SPACED 400mm CENTRES  
FLYING BARS  
UDL 5kN/BAR

HANDRAIL LOADING  
LATERAL LOADING 3kN/m  
VERTICAL LOADING 1kN/m  
UPWARD LOADING 5kN/m

HANDRAIL LOADING  
LATERAL LOADING 3kN/m  
VERTICAL LOADING 1kN/m



**NOTE: THIS DRAWING IS FOR INFORMATION ONLY. FIGURES SHOWN GIVE INDICATIVE STATIC LOADS, ALLOWANCE MUST BE MADE FOR ALL DYNAMIC, CONSEQUENTIAL AND RESULTANT LOADS**

MAX. COLUMN LOAD 15kN OVER 200 x 200mm AROUND PERIMETER

MAX. COLUMN LOAD 65kN OVER 500 x 500mm

Stage E	24 Feb '11
Rev/Rev	Date
Project Ref: 05025 - Everyman Theatre Liverpool	
Drawing Type: GA Drawing	
Drawing Title: Loading Diagram of Main Theatre LONG SECTION	
Rev	Stage
AS	STAGE E
Rev	Rev
02.11	02.11
24.02.11	24.02.11
Rev number	Rev
05025-LD(LS)-111	E



17, PARK STREET, MANCHESTER, M2 3BQ, UK